

# Universal furnace electronic fan timer

50F06-843

**U**  
Universal

*A universal solution that is easy to install, configure, and diagnose.*



## **Universal replacement**

Replaces over 150 OEM and competitive part numbers

Works with SmartValve systems and other non-integrated modules

\*A registered trademark of Honeywell Inc.



## **Easy installation**

Six mounting hole options

Harnesses with terminal flags for easy wiring

Terminals are labeled to match multiple existing boards

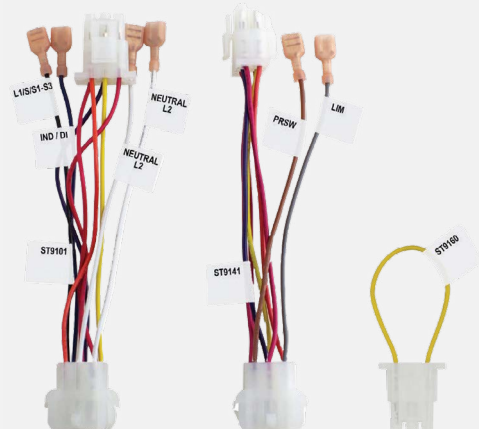
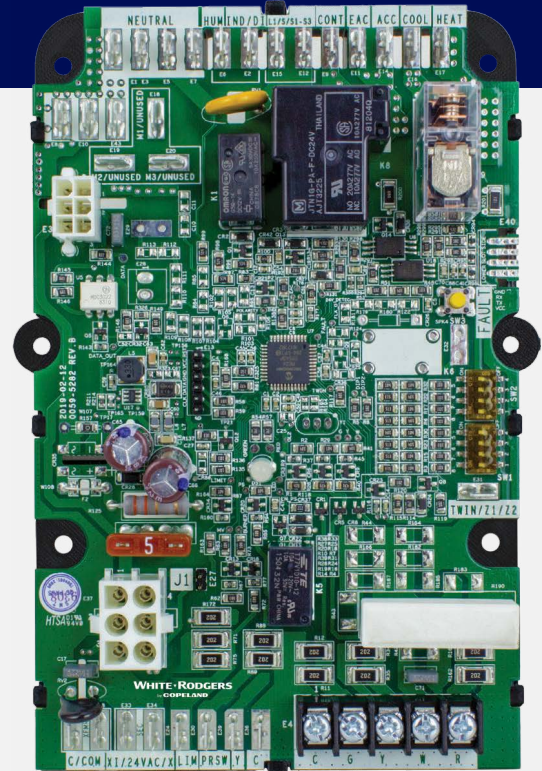
Transformer connections offer 1/4" and 3/16" terminals



## **Advanced diagnostics**

Tri-Color LED displays status and fault codes

Exclusive fault recall button



**WHITE RODGERS**  
by **COPELAND**

## 50F06-843 - For single stage furnaces with PSC inducer and blower motors

### Competitive comparison

Features	White-Rodgers - 50F06-843	Brand X
Board cross-references	150+	48
Standard mounting options	2	1
24v transformer 1/4" spade extension wires	Included	X
Terminal label id's cover multiple board versions	✓	X
Harnesses with terminal flags for easy wiring	✓	X
Heating & cooling fan can be operated on single speed (ACC output)	✓	X
Fan only (G) can be set to heating or cooling speed	✓	X
1/4" & 3/16" 24v transformer connections	✓	X
Unused motor / park terminals	3	2
Tri-color led display	Green/amber/red	Green only
Tri-color led displays heat/cool/fan status	✓	X
Fault code label	✓	X
Fault recall & clearing	Simple push button	None

### Specifications

#### Electrical ratings:

Input low voltage: 25 VAC 60 Hz  
 Input line voltage: 115/230 VAC 60 Hz  
 Max input current: 800mA @ 25 VAC

#### Operating temperature range:

-40° to 176° F (-40° to 80° C)

#### Dimensions:

5.0" W x 7.0" L x 1.50" D

#### 1 Year limited warranty

### Timing specifications

Post purge	Lockout time	Heat ON delay	Heat OFF delay	Cool ON delay	Cool OFF delay
5	60 min	30*, 60	60,120*, 150, 180	4*, 30	30*, 60

All times are in seconds unless noted otherwise

\*Default dipswitch settings

### Cross reference

<b>Honeywell</b>	ST9120G4038	<b>Consolidated Ind.</b>	40403-002	<b>Rheem/RUUD Brands</b>	1011179	<b>JCI/York/Coleman/Evcon</b>	
	ST9101A1006		40403003		1011543		
	ST9101A1014	<b>ST9120U1011</b>	40403-003	47-22693-01	1011927		2702-300
	ST9101A1022		45392001	47-22693-02	1012106		2702-300P
	ST9120A1006		45692001	47-22827-01	1012358		3101237000
	ST9120A2004	<b>Goodman/Amana/Janitrol</b>	384938001	47-22827-02	1014460		3102959000
	ST9120B1005		B180911	47-22827-03	1084197		33101237000
	ST9120C1012		B18099-11	47-22827-81	1150489		025-32816-000
	ST9120C1020		B1809911S	47-22827-82	1160192		026-32254-000
	ST9120C2002		CARB1809911	47-22827-83	1170063		026-34030-000
	ST9120C2010		CARL38267	47-22828-01	1138-83-200A		031-01237-000
	ST9120C2028			47-22828-02	1138-200		031-02959-000
	ST9120C3000	<b>ICM</b>	400B0091	47-22830-01	HQ1008773HW		1138-103
	ST9120C3018		45692-001	47-22830-02	HQ1008786HW		2895-3001
	ST9120C4008		87H88		HQ1009836HW		331-01237-000
	ST9120C4016		87H8801	<b>Robertshaw</b>	HQ1009837HW		S1-02532816000
	ST9120C4040		R40403001	695-003	HQ1009838HW		S1-0263403000
	ST9120C4057	<b>Lennox/Armstrong/Ducane/Excel</b>	R40403001		HQ1010031HW		S1-03101237000
	ST9120C5005		R40403002	<b>ICP/Arcoaire/Comfortmaker/Heil/Tempstar</b>	HQ1011179HW		S1-031-01237-000
	ST9120C5013		45392-001		HQ1011543HW		S1-03102959000
	ST9120D3009		20054501		HQ1011927HW		S1-031-02959-000
	ST9120G2008		20054502		HQ1012106HW		S1-2702-300P
	ST9120G2016		2043081		HQ1012358HW		S1-33101237000
	ST9120G2024		20430801		HQ1084197HW		S1-331-01237-000
	ST9120G2032	<b>Carrier/Bryant</b>	40403001		HQ1170063HW		
	ST9120G4004		40403-001				<b>Weil-McLain</b>
	ST9120G4012		40403002				4116000
			X8609				
			X860901				

To learn more, visit  
[copeland.com/white-rodgers](http://copeland.com/white-rodgers)

R-4968 (9/19) ©2024 Copeland LP.

**WHITE RODGERS**

by **COPELAND**